



12/30 Belmore Street Ryde NSW

2  1  1 

Nestled in a highly sought after pocket and set in a tree-lined street, this stunning top-floor apartment enjoys spacious interiors and is flooded with natural light. Recently refreshed, its functional layout and prime location offers an unmatched lifestyle of tranquillity and urban convenience right in the heart of Top Ryde. Situated only 400m walk to Top Ryde City shopping centre, stroll to local restaurants, cafés and parks.

Type : Apartment
Price : \$ 650,000
View : <https://www.landmarkrealtygroup.com.au/sale/nsw/northern-suburbs/ryde/residential/apartment/8035894>

- * Modern open-plan layout with an abundance of natural light, top floor position
- * Expansive living and dining area that seamlessly flows to the covered balcony
- * Sleek stone kitchen with Stainless Steel appliances
- * Two spacious bedrooms, new flooring, freshly painted,

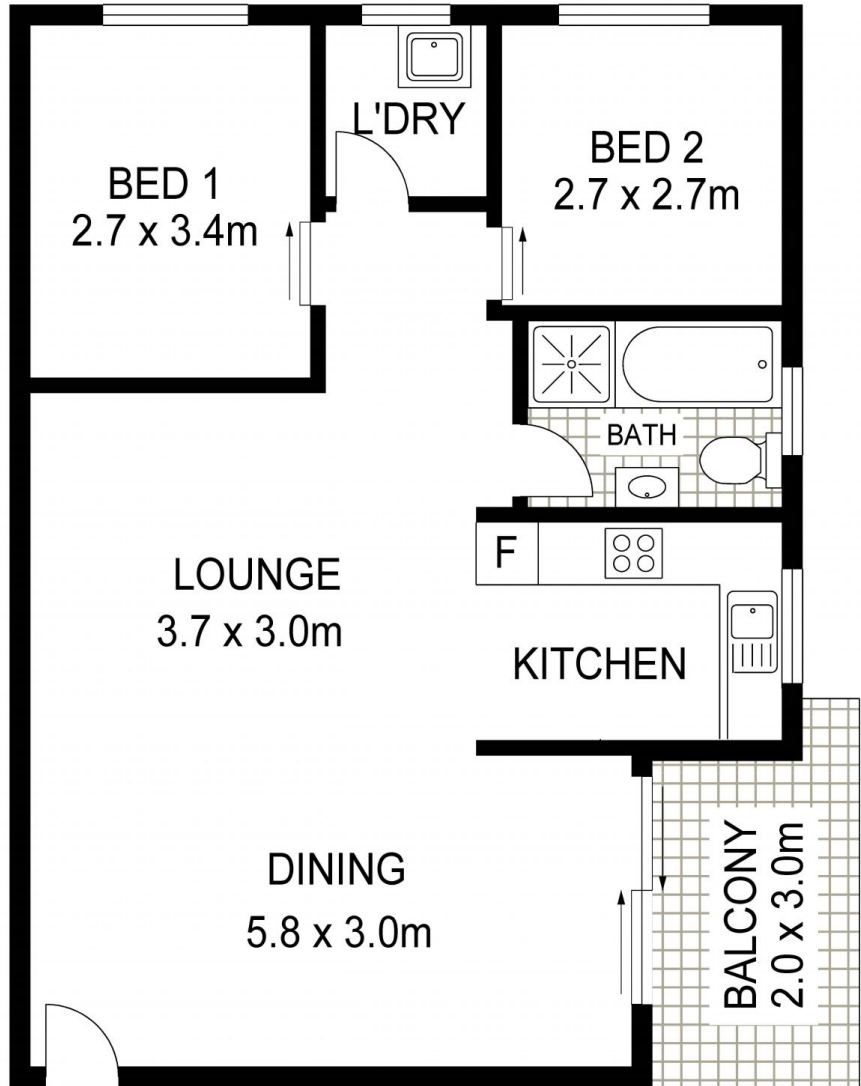
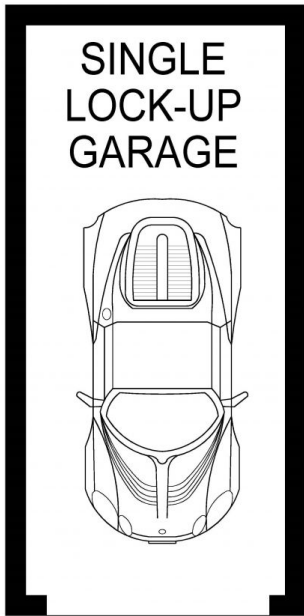
[For full version visit the website](#)



Lee Chan
02 8221 8819



Eric Chan
02 8221 8819



12/30-32 BELMORE STREET

RYDE

Area: 77.5sqm
Total : 96.6sqm



Scale in metres indicative only. Dimensions are approximate. All information contained herein is gathered from sources we believe to be reliable. However we cannot guarantee its accuracy and interested persons should rely on their own enquiries.