






169/4 Dolphin Close Chiswick NSW

2  2  2 

Beautifully presented, this sunny ground floor apartment is a haven of designer style, created with luxury cosmopolitan living in mind. Featuring spacious, light and airy interiors with an effortless indoor/outdoor flow, it enjoys a sunny Northerly aspect and a private alfresco setting perfect for year-round entertaining.

Nestled in the enviable Riviera Waterfront development, offering a magnificent lifestyle with full resort facilities and positioned for the utmost convenience, easy stroll to bayside parks, shops, cafés and transport services.

- * Stylish, light-filled living & dining room opens out to private alfresco
- * Covered courtyard perfect for entertaining, sunny

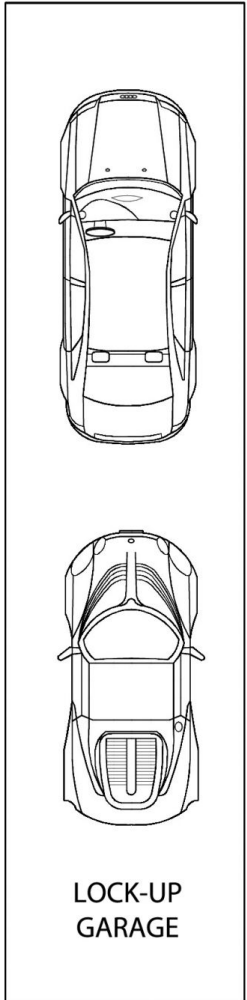
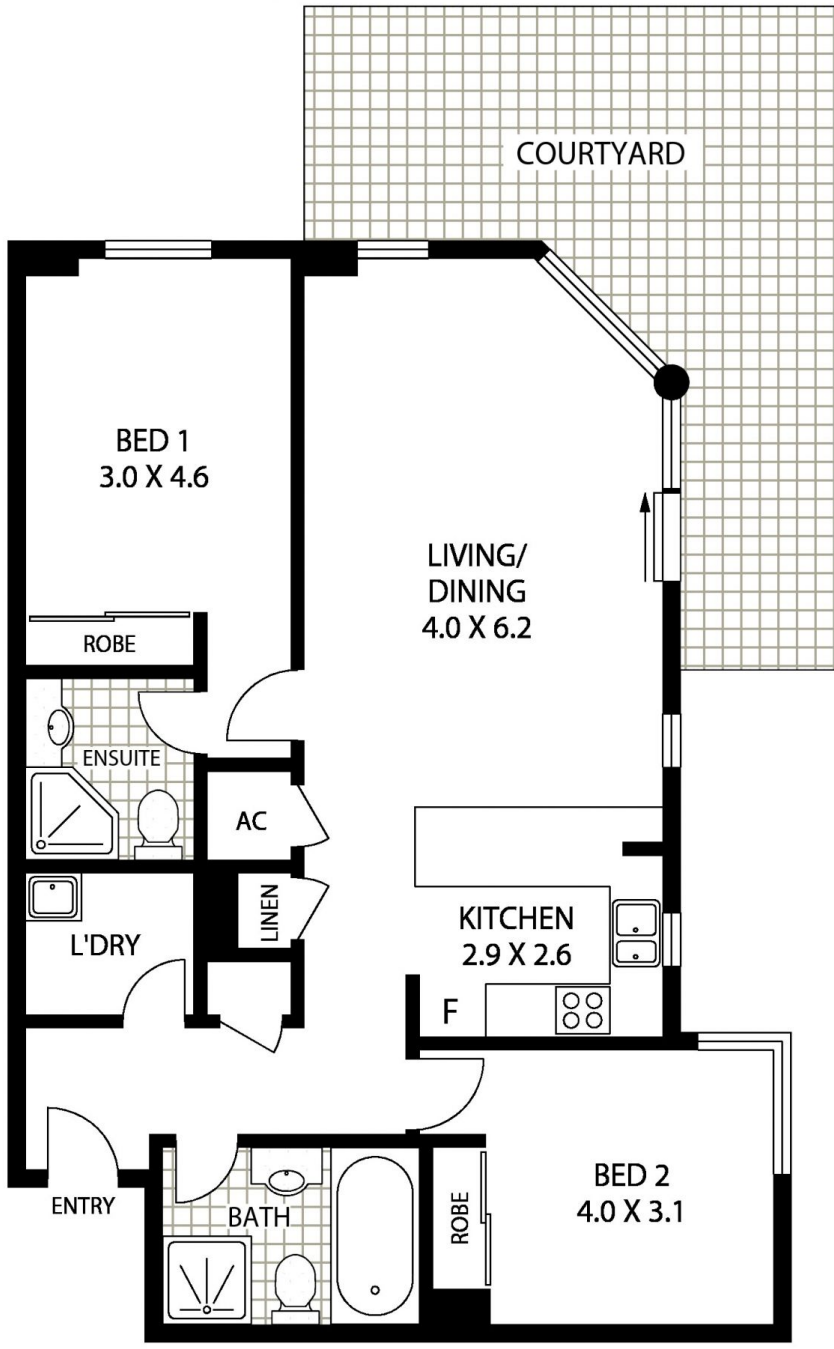
Type : Apartment

View : <https://www.landmarkrealtygroup.com.au/lease/nsw/inner-west/chiswick/residential/apartment/8077956>



Eric Chan
02 8221 8819

[For full version visit the website](https://www.landmarkrealtygroup.com.au)



LOCK-UP GARAGE



STORAGE CAGE

INTERNAL AREA:- 105 SQM (INCLUDING COURTYARD)
 TOTAL AREA:- 138 SQM (INCLUDING GARAGE & STORAGE)



169/4 DOLPHIN CLOSE

CHISWICK



Floor Plan Disclaimer: MTG Media floor plans / site plans are intended as an approximate guide only. No representations or warranties of any nature are given or intended and any person or company using this information other than as a guide should always rely on their own enquiries. MTG Media marketing services - 1300 133 145 - Photography, Floor plans, Copywriting, Video, Drone - www.mtgmedia.com.au