



173/4 Dolphin Close Chiswick NSW

1  1  1 

Enjoying a private elevated position, this spacious one-bedroom apartment promises easy-care living in an unbeatable lifestyle location. Offering light-filled interiors with welcoming open plan living and dining spaces and enjoying a leafy outlook from all rooms flooded with Easterly light.

Nestled in the enviable Riviera Waterfront development, offering a magnificent lifestyle with full resort facilities and positioned for the utmost convenience, easy stroll to bayside parks, shops, cafés and transport services.

- * Spacious light-filled living and dining area spills to outside
- * Covered balcony with leafy outlook ideal for alfresco entertaining

Type : Apartment
Price : Under Contract
View : <https://www.landmarkrealtygroup.com.au/sale/nsw/inner-west/chiswick/residential/apartment/8132870>

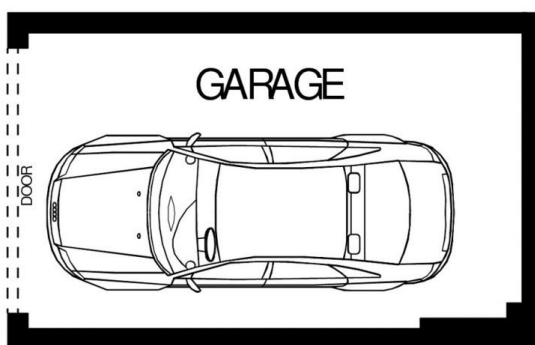
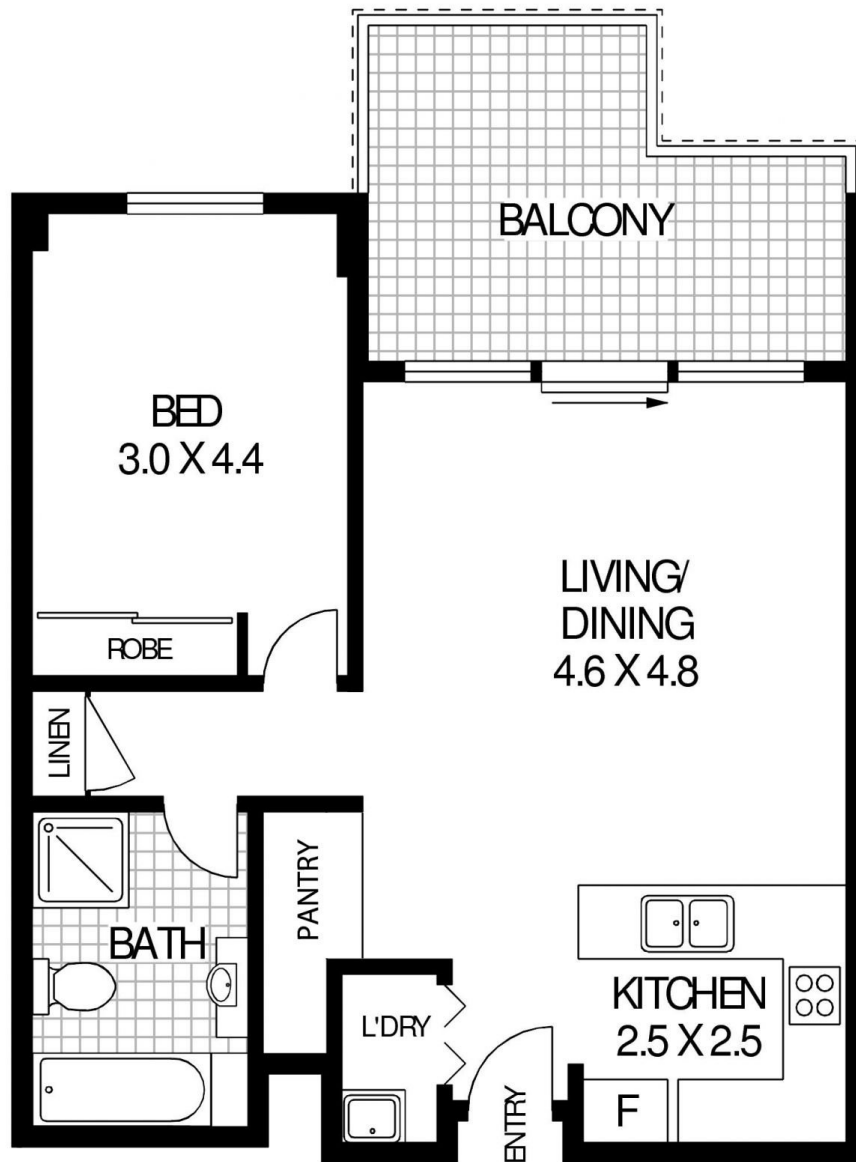


Lee Chan
02 8221 8819



Eric Chan
02 8221 8819

[For full version visit the website](https://www.landmarkrealtygroup.com.au)



Storage
3 SQM

INTERNAL AREA:- 65 SQM (INCLUDING BALCONY)
TOTAL AREA:- 82 SQM (INCLUDING GARAGE & STORAGE)



173/4 DOLPHIN CLOSE

CHISWICK



Floor Plan Disclaimer: Mind the Gap (mtg) floor plans/ site plans are intended as an approximate guide only. No representations or warranties of any nature are given or intended and any person using this information other than as a guide should always rely on their own enquiries. Mind the Gap property marketing services/ 1300 133 145/ Photography, Floor plans, Copywriting, Video, Design / www.mindthegap.com.au