



#### 404/3 Bechert Road Chiswick NSW

2  2  1 

Emphasizing an effortless lifestyle of comfort and luxury, this park side residence has been tastefully renovated with a designer's attention to detail to create a sanctuary of relaxed sophistication. Set in a tranquil position that enjoys a sunny outlook and park-side views, this apartment boasts impressively generous living spaces - perfect for entertaining - a new full-sized kitchen and an abundance of storage. Perfect for discerning professionals, downsizers or for family life, this is an unparalleled lifestyle for all to enjoy.

Nestled in the enviable Riviera Waterfront development, offering a magnificent lifestyle with full resort facilities and positioned for the utmost convenience, easy stroll to bayside parks, shops, cafés and transport services.

**Type** : Apartment

**Price** : Contact Agent

**View** : <https://www.landmarkrealtygroup.com.au/sale/inner-west/chiswick/residential/apartment/8137304>

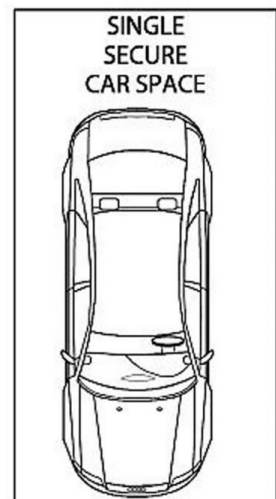
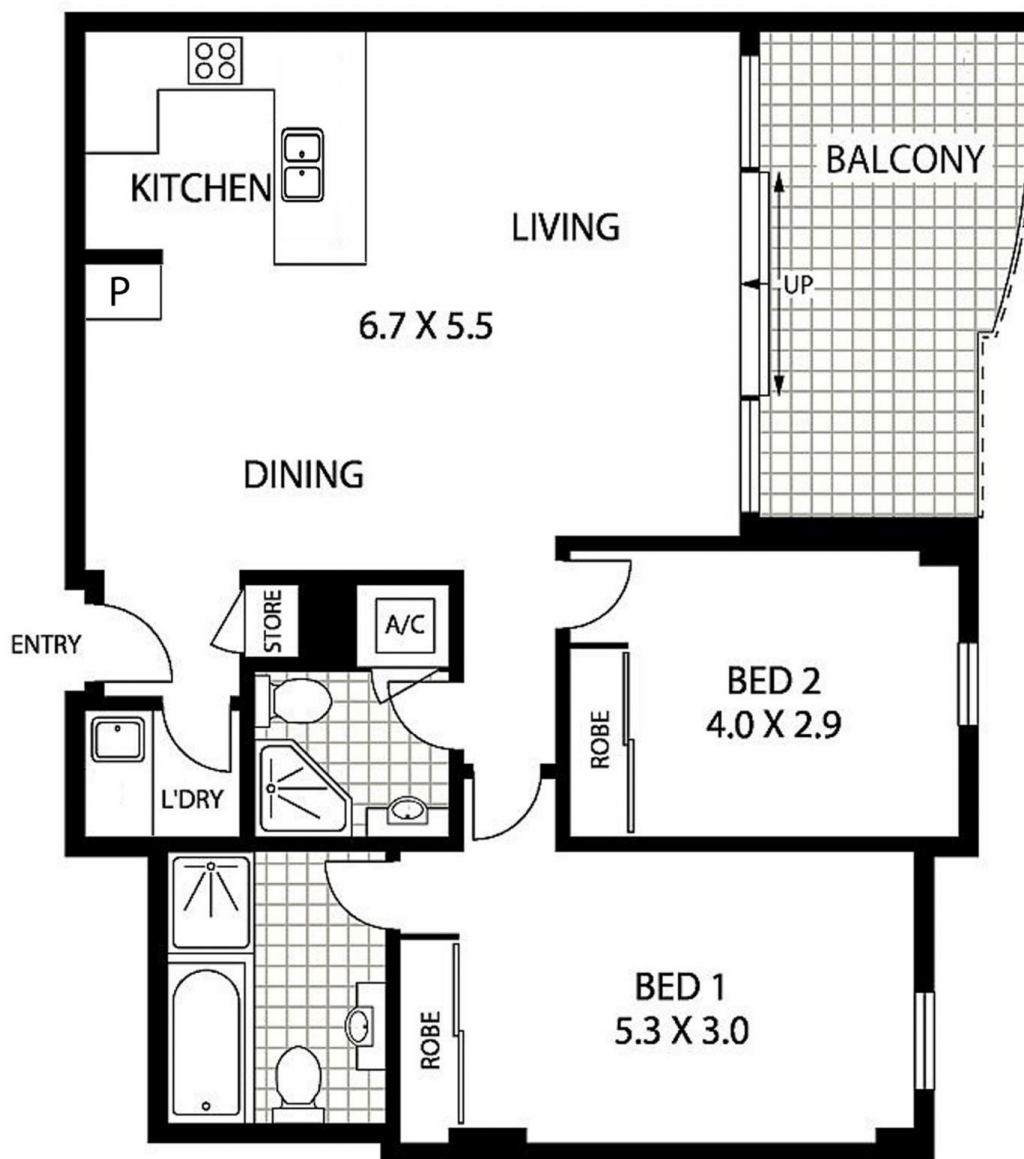


**Eric Chan**  
02 8221 8819



**Lee Chan**  
02 8221 8819

[For full version visit the website](https://www.landmarkrealtygroup.com.au)



404/3 BECHERT ROAD

CHISWICK

INTERNAL AREA :- 97 SQM (INCLUDING BALCONY)  
TOTAL AREA :- 112 SQM (INCLUDING CAR SPACE)



**Floor Plan Disclaimer:** Mind the Gap (mtg) floor plans / site plans are intended as an approximate guide only. No representations or warranties of any nature are given or intended and any person using this information other than as a guide should always rely on their own enquiries. Mind the Gap property marketing services / 1300 133 145 / Photography, Floor plans, Copywriting, Video, Online, Design / [www.mindthegap.com.au](http://www.mindthegap.com.au)