



366/3 Bechert Road Chiswick NSW

1  1  1 

Set on a private corner setting, this spacious one-bedroom ground floor apartment offers an exceptional lifestyle of low-maintenance living in mind, with welcoming free-flowing interiors and a spacious covered courtyard ideal for year-round entertaining.

Nestled in the enviable Riviera Waterfront development, offering a magnificent lifestyle with full resort facilities and positioned for the utmost convenience, easy stroll to bayside parks, shops, cafes and transport services.

- * Desirable corner elevated position, Easterly facing, quiet position
- * Open plan, light-filled living & dining room spills out to alfresco setting

[For full version visit the website](https://www.landmarkrealtygroup.com.au)

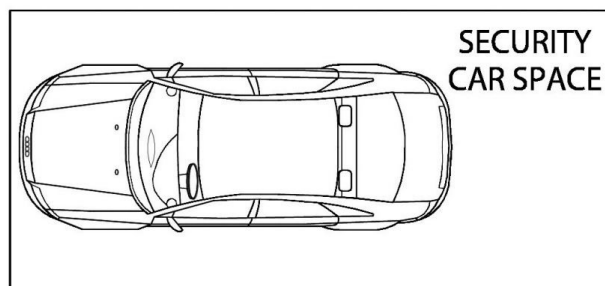
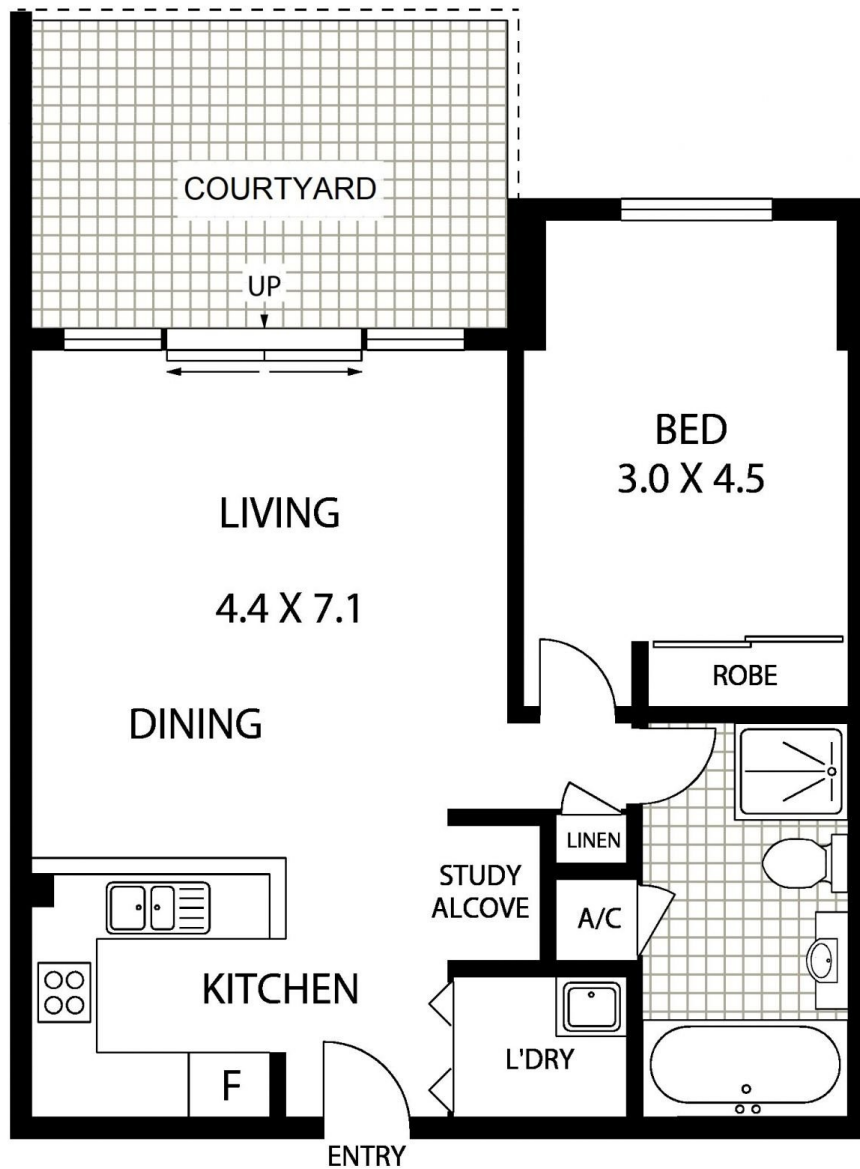
Type : Apartment
Price : Contact Agent
View : <https://www.landmarkrealtygroup.com.au/sale/inner-west/chiswick/residential/apartment/8175941>



Lee Chan
02 8221 8819



Eric Chan
02 8221 8819



INTERNAL AREA: 71 SQM (INCLUDING COURTYARD)
TOTAL AREA:- 85 SQM (INCLUDING CAR SPACE)

366/3 BECHERT ROAD

CHISWICK

Floor Plan Disclaimer: Mind the Gap (mtg) floor plans / site plans are intended as an approximate guide only. No representations or warranties of any nature are given or intended and any person using this information other than as a guide should always rely on their own enquiries. Mind the Gap property marketing services / 1300 133 145 / Photography, Floor plans, Copywriting, Video, Online, Design / www.mindthegap.com.au

landmark
REALTY GROUP