






### 17/27 Windward Parade Chiswick NSW

2  2  2 

Immaculately presented, this contemporary apartment offers an ideal low-maintenance lifestyle in a resort style setting. Boasting an expansive open-plan living & dining area with an abundance of natural light.

Nestled in the prestigious Nautica Waterfront development on the stunning shores of Abbotsford Bay, providing a care-free lifestyle that is second to none.

- \* Large covered balcony, corner position, sunny North-West aspect
- \* Abundance of natural light, spacious open plan living & dining
- \* Stone kitchen with Smeg S/S Appliances; gas cooktop, oven, dishwasher

[For full version visit the website](https://www.landmarkrealtygroup.com.au/lease/nsw/inner-west/chiswick/residential/apartment/8180497)

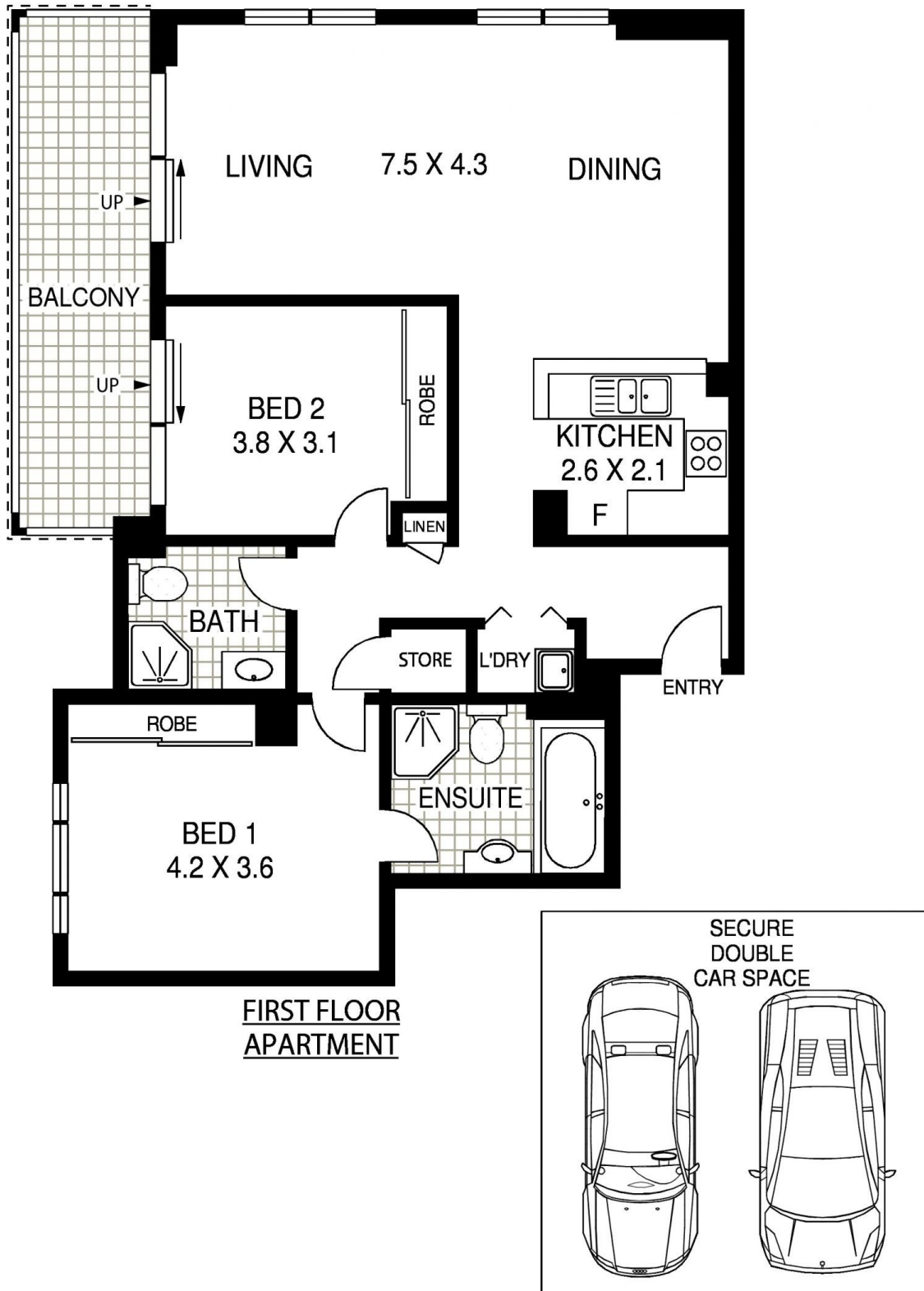
**Type** : Apartment

**Price** : \$870 pw

**View** : <https://www.landmarkrealtygroup.com.au/lease/nsw/inner-west/chiswick/residential/apartment/8180497>



**Eric Chan**  
02 8221 8819



**FIRST FLOOR  
APARTMENT**

INTERNAL AREA: 98SQM ( INCLUDING BALCONY )  
TOTAL AREA: 130SQM ( INCLUDING DOUBLE SECURE CAR SPACE )



**17/27 WINDWARD PARADE**

**CHISWICK**



**Floor Plan Disclaimer:** Mind the Gap (mtg) floor plans / site plans are intended as an approximate guide only. No representations or warranties of any nature are given or intended and any person using this information other than as a guide should always rely on their own enquiries. Mind the Gap property marketing services / 1300 133 145 / Photography, Floor plans, Copywriting, Video, Online, Design / www.mindthegap.com.au